



Less False, Better Guard

Dahua Technology Launches SMD Plus Solution



False Alarm Filter



Quick Target Search



Affordable Solution



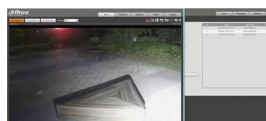
Simple Configuration

Dahua Technology Launches SMD Plus Solution

Highlights

False Alarm Filter, Human/Vehicle Classification

After capturing the target within monitoring range, the camera filters out leaves, lights, pets and other disturbing objects. Based on deep learning algorithm, the camera classifies human/vehicle sends alarm push notification in real time.



Filters useless information (light)



Filters extreme weather and sends alarm push notification caused by human



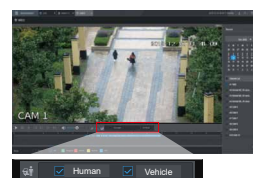
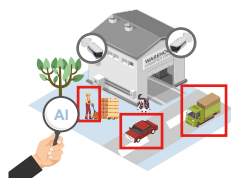
Filters useless information (pet)



Alarm push notification caused by human and vehicle

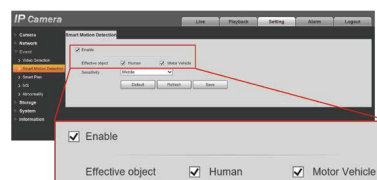
Quick Target Search

Allows extraction and classification of human and vehicle from massive video data, making it easy for end users to trace data history and analyze information. It also offers optional human/vehicle playback for quick target search, saving event retrieval time.



Simple Configuration

SMD can be enabled with just a single click. It also supports human/vehicle classification settings.



Affordable Solution

Offers smart functions at affordable price, allowing everyone to experience AI powered security.



Alarms when a human/vehicle enters a dangerous area



Alarms when a human approaches a cultural relic



Alarms when a stranger enters the property



Alarms when a human enters a restricted area

Application Scenarios



Factory

- Provides early warning
- Reduces the number of patrol staff
- Prevents personnel from entering dangerous areas

Villa

- Prevents strangers from entering the property
- Offers real-time monitoring and alarm push notification



* Design and specifications are subject to change without notice.

Ver. 5, May, 2020

DAHUA TECHNOLOGY

No.1199 Bin'an Road, Binjiang District, Hangzhou, China. 310053

Tel: +86-571-87688883 Fax: +86-571-87688815

Email: overseas@dahuatech.com

www.dahuasecurity.com

